

In general, in response to incidents involving animals:

- **DO NOT** chase animals
- **DO NOT** use sirens
- **LIMIT** use of emergency lights
- If there are many dead animals, do not enter the area until you know it's safe.

Frequently used phone numbers (in no particular order):

PEMA State Emergency Operations Center

717-651-2001 answered 24/7; statewide dispatch center for ALL state agencies and resources

PA Dept. of Agriculture, Bureau of Animal Health

717-772-2852 this 24/7 number is forwarded to a cell after hours

USDA Veterinary Services

717-540-2777

PA Dept. of Environmental Protection

877-333-1904 24/7 emergency hotline

PA Game Commission

814-643-1831 (Adams, Franklin, York, Cumberland, Perry
Typically 6A-11P daily)

610-926-3136 (Dauphin, Lancaster, Lebanon, Schuylkill
Typically 7A-11P daily)

USDA Wildlife Services

717-236-9451 State Office in Harrisburg (normal business hours)

610-698-7610 Eastern District Supervisor (after hours)

*What is C.A.R.T.?

County Animal Response Team

You may need to activate the CART to assist with livestock, poultry or equine emergencies.

This guide has been developed to aid emergency dispatchers and emergency responders in South Central Pennsylvania to manage incidents involving animals. Use this guide in accordance with local protocols.

Developed by the
South Central Task Force Agriculture Subcommittee
Revised February 2021

For more information visit: www.sctfpa.org



PREVENT DISEASE SPREAD

Below are several basic practices to observe when entering a farm, when practical, realizing emergency response doesn't always allow this.



LIMIT public access to the farm/operation.



WASH YOUR HANDS with soap and water before and after contact with live or dead animals.



Put on **DISPOSABLE BOOT COVERS** before stepping out of your vehicle and remove them before stepping back into your vehicle.



Before moving to another farm/operation: **CLEAN** any equipment and vehicles with warm, soapy water, **AND DISINFECT** with an approved product such as bleach or Lysol.



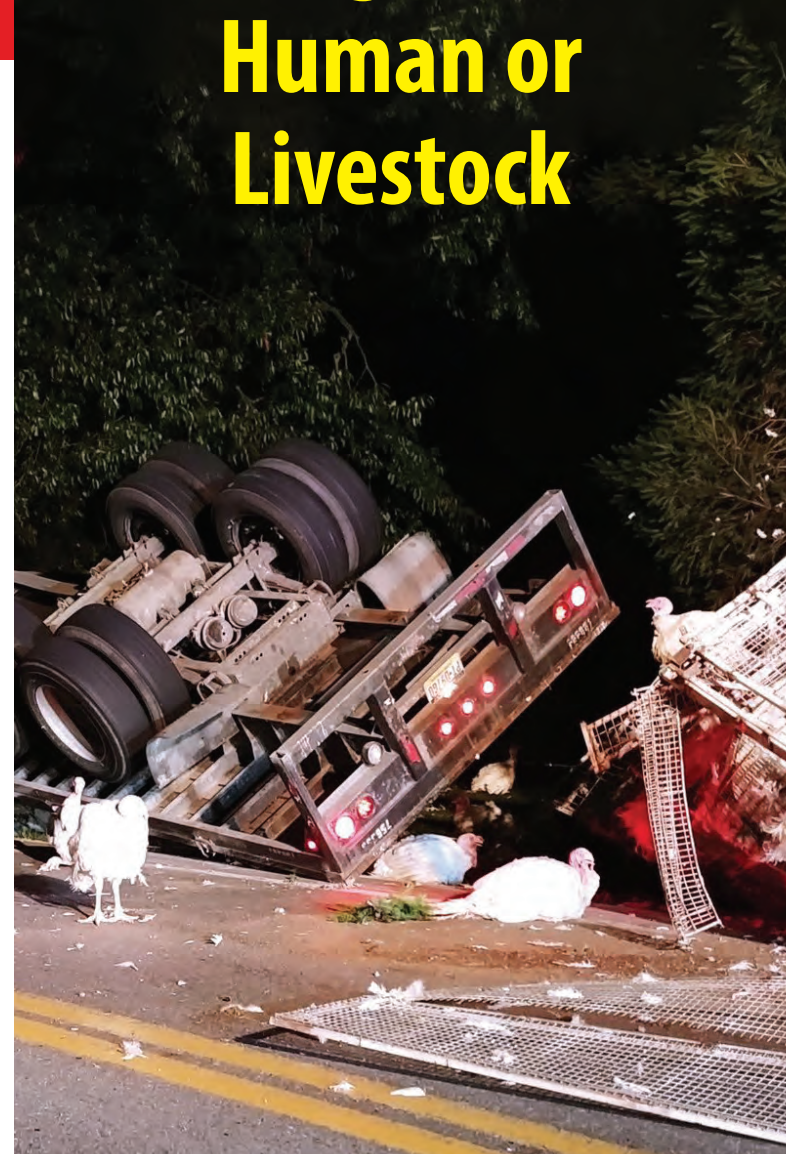
CHANGE your clothes and footwear before entering another farm/operation.



If you observe large numbers of sick or dead animals, **DO NOT** enter the site! **IMMEDIATELY** call the PA Department of Agriculture or USDA Veterinary Services for further guidance.

Photo on front and inside: ©Goodwill Fire Company #1, York Township, PA

Agricultural Emergencies: Human or Livestock



Emergency Services Reference Guide

AGRICULTURAL EMERGENCY SITUATION CONTACTS

Animal Stuck In A Hole, A Well, or Partially Buried

Notify 911 (dispatcher can activate C.A.R.T.* and possibly Fire/Rescue or Technical Rescue on your request)

Escaped Animals (Livestock, Poultry, Equine)

Advice or assistance needed to safely corral animals and keep responders/public safe

Notify 911 (dispatcher can activate C.A.R.T.* upon request)

Contact Penn State Extension office for your county

(during business hours) <https://extension.psu.edu/county-offices>

Truck/Trailer Hauling Animals Overturns on Roadway

Animals escaped, injured or dead

Notify 911 (dispatcher can activate C.A.R.T.* upon request)

Notify PEMA Emergency Operations Center (24/7) PEMA will notify PA Dept of Agriculture and DEP (if disposal is being considered)

Need Animal Behavior or General Farm Advice or Assistance

Contact Local, County Penn State Extension Office

<https://extension.psu.edu/county-offices>

Catastrophic Loss of Poultry or Livestock Due To Fire or Natural Disaster

Contact Local, County Penn State Extension Office

(during business hours) <https://extension.psu.edu/county-offices>

Notify PEMA (24/7) PEMA will notify PA Dept of Agriculture and DEP (to clarify disposal considerations)

Snakes or Reptiles (Handling or Catching)

Contact Rick Krumrine 717-658-6105

Contact PA Fish and Boat Commission (8 AM- 4 PM)

717-486-7087 (Adams, Cumberland, Dauphin, Franklin, Perry, Lebanon, York) or 717-626-0228 (Lancaster, Schuylkill)

Injured or Misplaced Wildlife

Including if advice is needed how to safely euthanize the animal

Contact PA Game Commission or USDA Wildlife Services

(numbers are listed on the back panel)

Suspected Rabies

Human: Potentially exposed victim or family should notify primary care provider and Health Dept at **1-877-PAHEALTH**

Domestic Animals: Notify PA Dept of Agriculture **717-772-2852**

Dog: Notify PA Dog Law office **717-787-3062** (Mon-Fri 8AM- 4PM)

Wildlife: Contact PA Game Commission (see back panel)
Contact USDA Wildlife Services (see back panel)

Manure Storage Rescue

NEVER, EVER go in after a victim, it is dangerous and deadly!

Stay upwind of situation.

Notify 911 (dispatcher will activate "Technical Rescue Team" and possibly local HAZMAT team)

Confined Space Rescue (e.g. Silos, Grain Bins)

DO NOT attempt rescue! Allow trained responders to do it.

Notify 911 (dispatcher will activate "Technical Rescue Team" and possibly local HAZMAT team)

Overturned Tractor/Equipment Human Entrapment

DO NOT attempt to lift tractor/ equipment off of victim, let trained responders do it.

Notify 911 (dispatcher will activate "Technical Rescue Teams")

Agro-Terrorism Incidents or Food Tampering

Contact PA Dept of Ag Emergency Coordinator (24/7)

717-678-1636

Contact PSP PaCIC/Fusion Center at **877-777-6835**

Contact FBI at **717-232-8686** (Agro-Terrorism only. NOT for Food Tampering)

Suspected Foreign Animal Disease Outbreak

Unexplained High Mortality Event in Domestic Animals, Livestock or Poultry

Notify PA Department of Agriculture **717-772-2852** -or-

Notify USDA, APHIS, Veterinary Services **717-540-2777**

Animal Quarantine Enforcement or Stop-Movement Orders

Notify PA Dept of Agriculture **717-772-2852**

Chemical or Pesticide Incidents and/or Animal Feed Incidents

Notify 911 (dispatcher will activate local HAZMAT team)

Notify PA Dept of Agriculture, Bureau of Plant Industry **717-772-5222**

Notify PA DEP if environmental contamination occurs

Notify PEMA (24/7)

